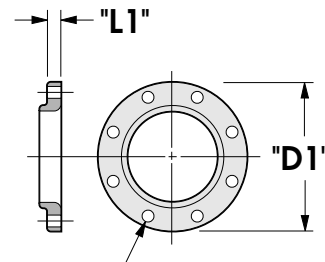
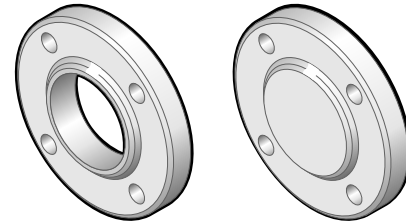


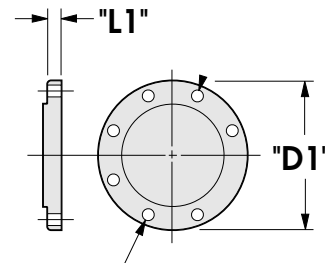
Flange & Blank

SPECIFICATIONS:

- Schedule 10 stainless steel substrate for strength and light weight
- Proprietary fluoropolymer coating integrally bonded to interior surfaces for unparalleled corrosion resistance
- Gore-Tex[®] PTFE gasket for superior joint seals
- Straight pipe manufactured with floating flanges, all other fittings manufactured with fixed flanges, mounting holes straddle vertical centerline - floating flanges for fittings available on request
- Handles wide range of pressures from full vacuum to 150 psi
- Handles wide range of temperatures from -150°F (-66°C) to 300°F* (149°C)
- Available in standard sizes 2" (50mm) thru 12" (300mm) diameter, straight lengths up to 10 feet
- Full compliment of reducers, tees, branches, elbows and custom manifolds for any system design up to 24" (600mm) diameter
- Fab-Tech can adapt to flanges in existing systems for easy connection



H - No. of Bolt Holes



H - No. of Bolt Holes

DESCRIPTION	"D1"	"L1"	"H"
2" DIA FLANGE & BLANK	6"	3/4"	4
3" DIA FLANGE & BLANK	7-1/2"	15/16"	4
4" DIA FLANGE & BLANK	9"	15/16"	8
6" DIA FLANGE & BLANK	11"	1"	8
8" DIA FLANGE & BLANK	13-1/2"	1-1/8"	8
10" DIA FLANGE & BLANK	16"	1-3/16"	12
12" DIA FLANGE & BLANK	19"	1-1/4"	12

- ALL DIMENSIONS IN INCHES
- CUSTOM PIPE LENGTHS LESS THAN 10' AVAILABLE ON REQUEST
- CHEMICAL AND TEMPERATURE RESISTANCE DATA OF THE FLUOROPOLYMER COATING USED EXCLUSIVELY ON PSP[®] PRODUCTS IS AVAILABLE FROM FAB-TECH.

Custom fittings available up to 24" diameter on request.