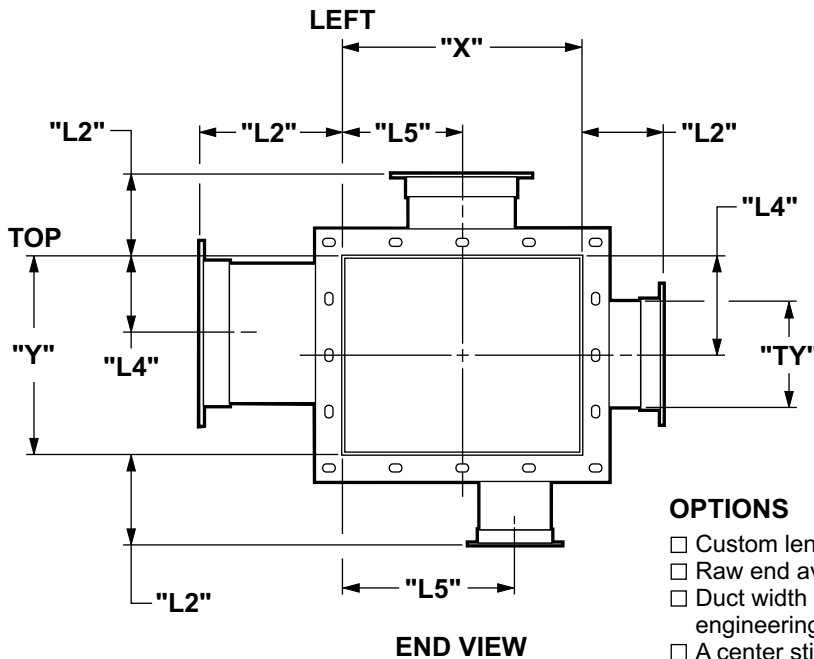
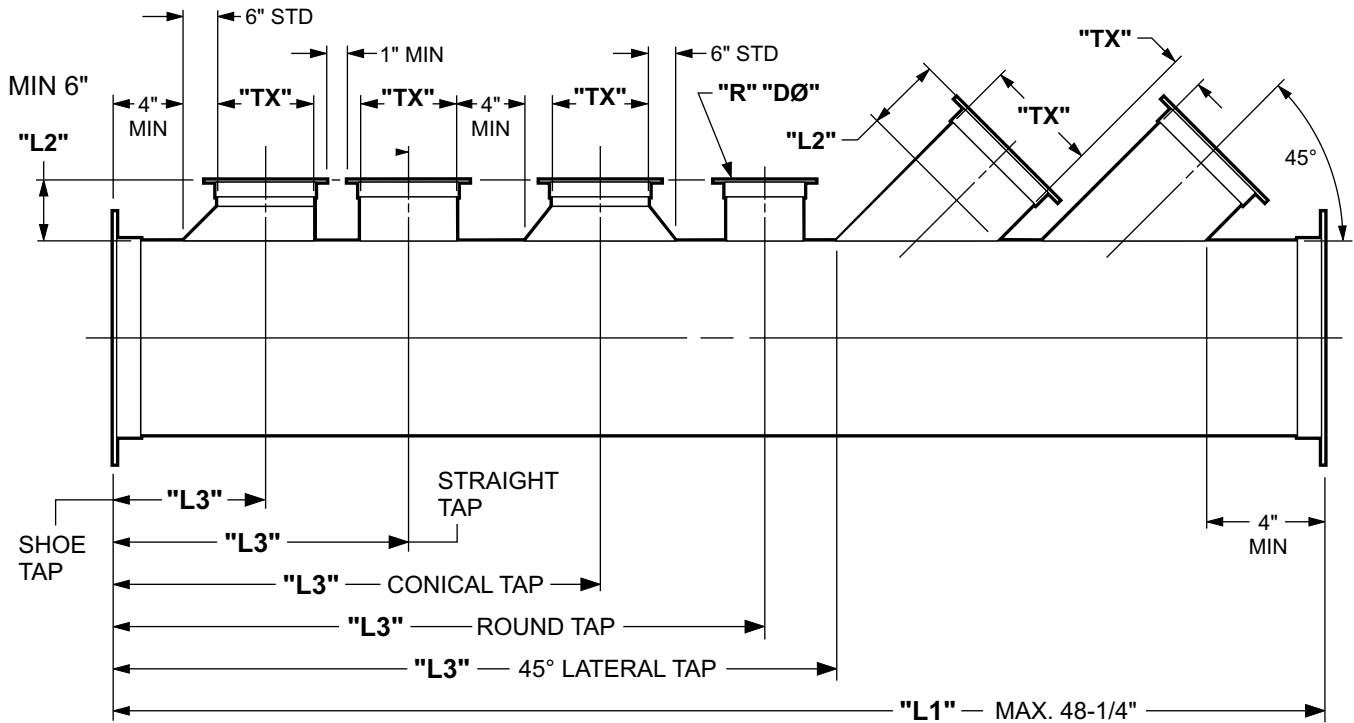


**Straight Duct with Multiple Taps**



ROUND RING TYPES ("R")	
<b>EZ</b>	<b>EZ CLAMPS</b> (AVAILABLE 4" - 14")
<b>SC</b>	<b>STAINLESS CAST RINGS</b> (AVAILABLE 4" - 14")
<b>BI</b>	<b>BLACK IRON ANGLE RINGS</b> (AVAILABLE 4" - 94")
<b>SS</b>	<b>STAINLESS ANGLE RINGS</b> (AVAILABLE 16" - 120")

**OPTIONS**

- Custom lengths available.
- Raw end available.
- Duct width or height of 98" and larger requires Fab-Tech engineering review and approval.
- A center stiffener (1" SCH40 pipe) is added at the midpoint of the flange for duct width or height of 50" and greater.

LONGER THAN STANDARD LENGTHS AND/OR HIGHER SYSTEM PRESSURES MAY REQUIRE ADDITIONAL STIFFENERS PER SMACNA, CONTACT FAB-TECH FOR SPECIFIC GUIDELINES.