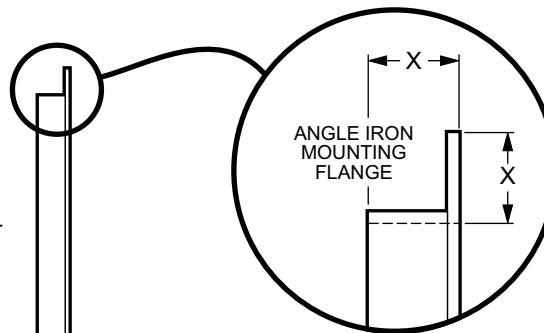
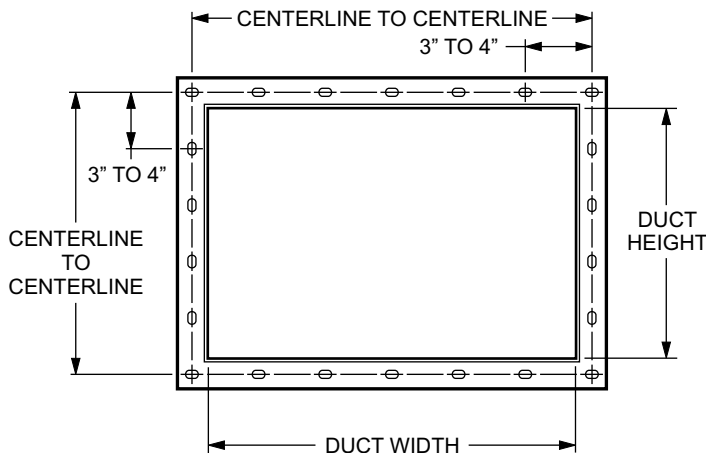


Mounting Flange Standards



- Angle sizes (X): 1.5", 2", 2.5", and 3.25"
- Angle thickness for all sizes: 3/16"
- Flange angle size determined from duct width and system pressure.

TABLE BELOW IS FOR STANDARD DUCT LENGTH OF 48-1/4"
S = STIFFENER ADDED

DUCT WIDTH	-6" W.G.		-8" W.G.		-10" W.G.		-12" W.G.	
	DUCT GAUGE	ANGLE SIZE	DUCT GAUGE	ANGLE SIZE	DUCT GAUGE	ANGLE SIZE	DUCT GAUGE	ANGLE SIZE
12" - 24"	16	1.5"	14	1.5"	12	1.5"	12	1.5"
26" - 36"	16	1.5"	14	2"	12	2"	12	2"
38" - 48"	16	2"	14	2"	12	2"	12	2"
50" - 60"	16 - S	2"	14 - S	2"	12 - S	2"	12 - S	2"
62" - 72"	16 - S	2"	14 - S	2"	12 - S	2"	12 - S	2"
74" - 84"	16 - S	2"	14 - S	2"	12 - S	2"	12 - S	2"
86" - 96"	16 - S	2"	14 - S	2"	12 - S	2"	12 - S	2.5"

DUCT WIDTH	-14" W.G.		-16" W.G.		-18" W.G.	
	DUCT GAUGE	ANGLE SIZE	DUCT GAUGE	ANGLE SIZE	DUCT GAUGE	ANGLE SIZE
12" - 24"	12	1.5"	10	1.5"	10	2"
26" - 36"	12	2"	10	2"	10	2"
38" - 48"	12	2"	10	2.5"	10	3.25"
50" - 60"	12 - S	2"	10 - S	2"	10 - S	2"
62" - 72"	12 - S	2"	10 - S	2"	10 - S	2"
74" - 84"	12 - S	2"	10 - S	2.5"	10 - S	2.5"
86" - 96"	12 - S	2.5"	10 - S	2.5"	10 - S	3.25"

NOTES

- Flange material is stainless steel.
- The number of holes for the bolt hole pattern is determined from the duct width and height. Hole to hole distance will be calculated to be between 3" to 4". Oblong holes are punched along the flange centerline.
- Duct width or height of 98" and larger requires engineering review.
- Interior stiffeners (1" SCH40 pipe) are welded between duct sides 50" wide or greater. Separate offset stiffeners are used when both duct width and height are 50" or greater.