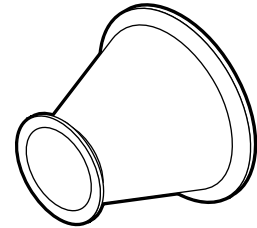
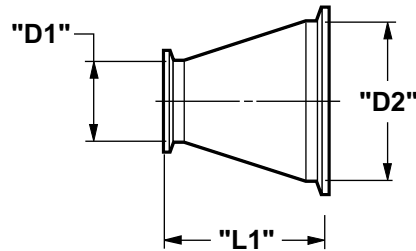


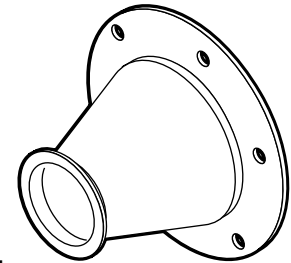
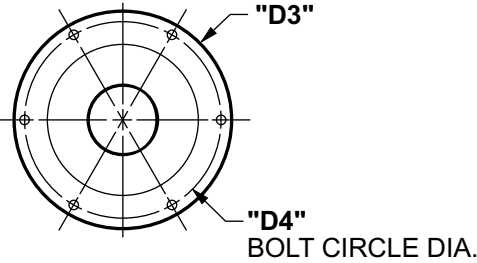
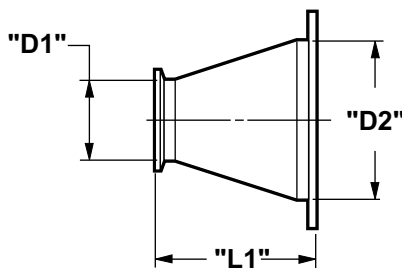
Concentric EZ Reducer



PART NO.*	DESCRIPTION	"D1"	"D2"	"L1"
PCA32F	2" TO 3" CONCENTRIC	2"	3"	4.31"
PCA42F	2" TO 4" CONCENTRIC	2"	4"	3.94"
PCA43F	3" TO 4" CONCENTRIC	3"	4"	4.31"

*PART NO. INCLUDES: (1) "D1" CLAMPS, (1) "D2" CLAMP & (2) GASKETS

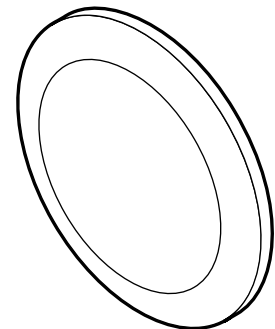
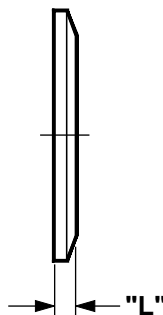
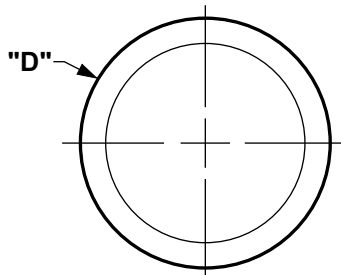
Angle Ring to EZ Reducer



PART NO.*	DESCRIPTION	"D1"	"D2"	"L1"	"D3" O.D.	"D4" DIA.
PCA32R	2" TO 3" ANGLE RING	2"	3"	4.25"	5.06"	4.31"
PCA42R	2" TO 4" ANGLE RING	2"	4"	3.88"	6.06"	5.31"
PCA43R	3" TO 4" ANGLE RING	3"	4"	4.25"	6.06"	5.31"

*PART NO. INCLUDES: (1) "D1" CLAMPS, "D2" HARDWARE FOR ANGLE RING, & (2) GASKETS

EZ End Cap



PART NO.*	DESCRIPTION	"D"	"L"
PZC02	2" END CAP	2"	0.21"
PZC03	3" END CAP	3"	0.21"

*PART NO. INCLUDES: (1) CLAMP & (1) GASKET