

16"-34" Heavy Duty Industrial Damper

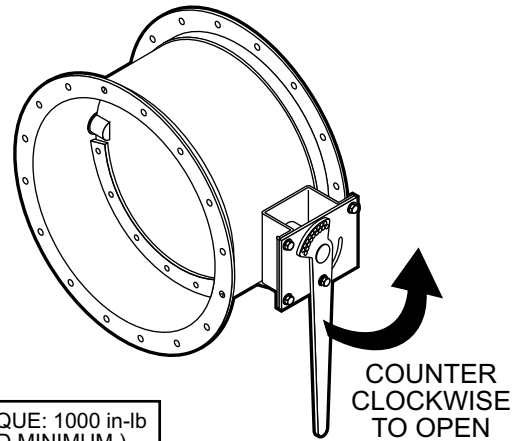
SPECIFICATIONS

- Welded stainless steel rings
- Mounting holes straddle vertical centerline.
- Liquid tight shaft seals - thermoplastic sleeve bearings.
- 1.38" stainless steel axles - .25" stainless steel blades.
- Stainless steel quadrant plate.
- Multi-position handle, 5° lockout feature.
- Welded blade stops with Viton seal (3/16" x 1-1/2").

OPTIONS

- Pneumatic actuator.
- Electric actuator.
- Manual gear drive actuator.
- Custom actuator mounting kits.
- Custom hole pattern.
- Pin-Lock Pin (Keyed MASTERLOCK[®] body sold separately)

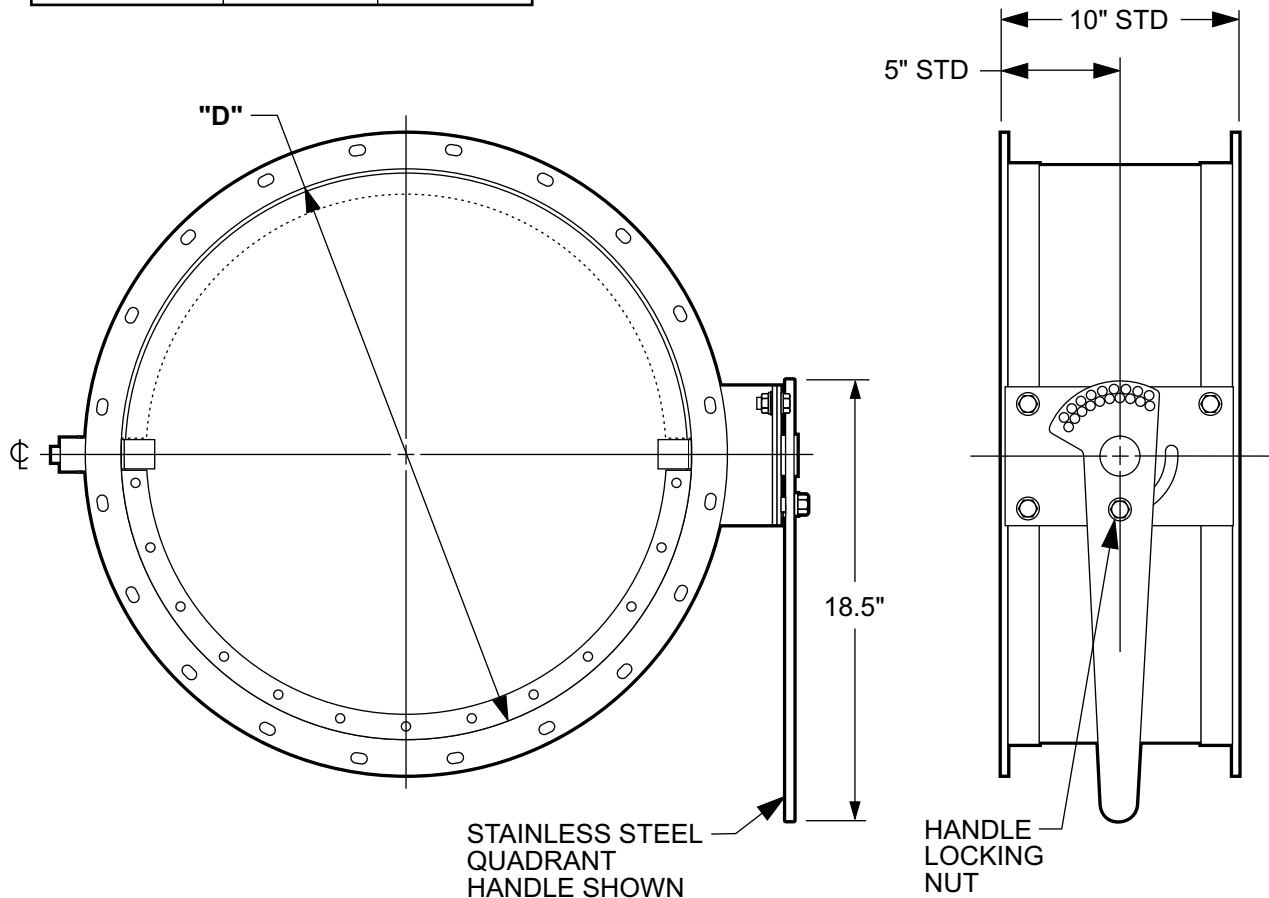
| DIAMETER | BLADE | BODY |
|------------|-------|------|
| 16" TO 34" | .25" | 10GA |



OPEN/CLOSE TORQUE: 1000 in-lb
(RECOMMENDED MINIMUM)

WITH JOINT SYSTEM

| | |
|---------------|-----------|
| SS ANGLE RING | 16" - 34" |
|---------------|-----------|



STAINLESS STEEL QUADRANT HANDLE SHOWN

HANDLE LOCKING NUT